



# Lily

and the box of  
Colours

Animated Feature Film

Family Audiences





Lily exists in a colourless world, where she and her family are consumed by grief following her brother Dion's death. When a mysterious creature enters her life, they embark on a journey through her imaginative world to restore vibrancy to her life. Pursued by the colour-devouring corruption representing the five stages of grief, she is determined to fend it off and continue her journey toward acceptance.



# The Story

In a world devoid of colour and joy, Lily's life is overshadowed by profound sadness due to the loss of her brother Dion. One quiet night, a mysterious duck-like creature—the guardian of colours—emerges and resolves to help Lily restore its colour and joy. To achieve this, they search for the “box of colours.”

Lily and the enigmatic creature, named Theon, venture into the vibrant “world of colour,” where they face creatures that have been corrupted by Lily's unresolved sadness and embody the five stages of grief she's going through—denial, anger, bargaining, and depression.

Ultimately, in her quest for the box of colours, Lily confronts the painful chapter of her past—the loss of her beloved brother. Everything revealed is a creation of Lily's mind: The corruption, symbolising the trauma she experienced and slowly taking over her well-being; Theon, a manifestation of Dion; the world of colour, co-crafted by Dion and Lily; and the enigmatic “box of colours,” which is a cardboard box full of cherished childhood memories from Lily and Dion's shared imaginations. It's a tangible representation of the acceptance Lily had to find within. Initially, Lily was too afraid to reopen it, fearing that it would serve as a stark reminder of her loss.

Presenting the box to her parents, Lily finds solace in its memories, reuniting the family in shared grief. As she unlocks not just the box but also her heart, Lily cherishes the love and memories she once shared with Dion, finding healing in the process.

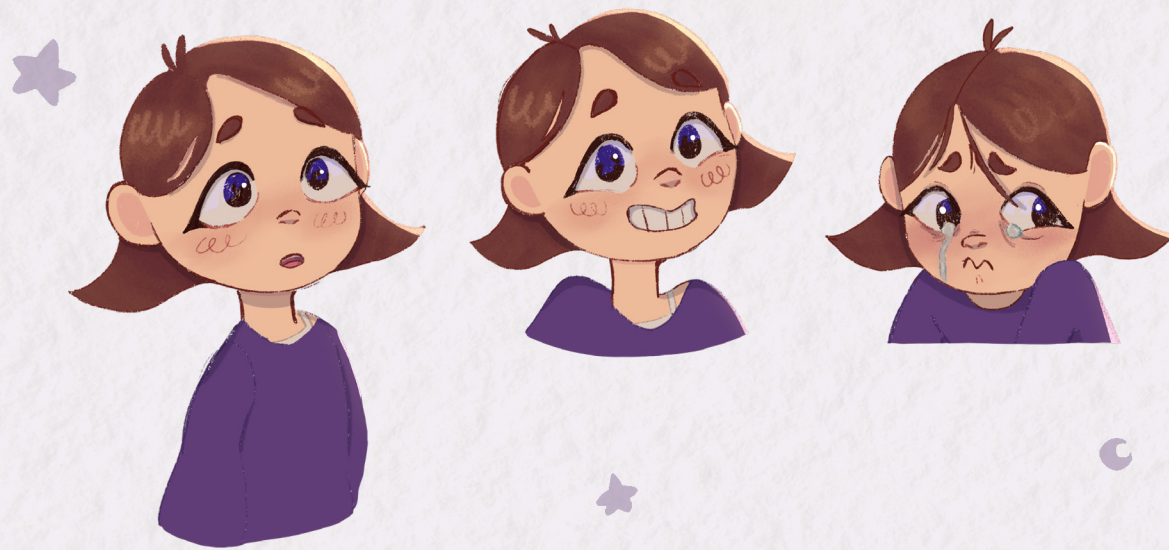




# Lily

Lily, a curious girl, often gives up too easily, despite her ability to solve the most challenging problems. She once had a steadfast champion in her older brother Dion, who pushed her forward. After Dion's untimely passing, Lily's world crumbled, leaving her lost in despair. Yet, within that void, Lily clings to a cherished gift from Dion—a vibrant fantasy world etched in her mind, where they once roamed together.

Lily subconsciously attempts to make sense of her feelings of loss by projecting her grief onto her imaginary world and its creatures.



# Theon

Theon is an enthusiastic goofy duck, his recklessness often surpassing his confidence in the face of challenges. He embodies the essence of Dion, a figment of Lily's imagination, and mirrors Dion's adventurous spirit from their cherished fantasy games.

Theon's unbridled optimism propels Lily forward, much as Dion once did. In difficult circumstances, he reminds her of the brotherly encouragement that still resides in her heart.





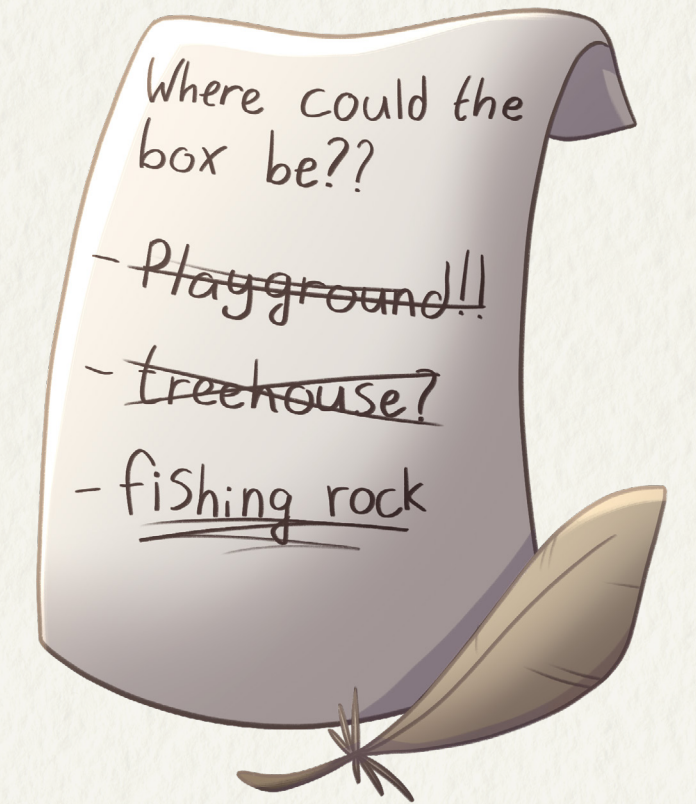


# The World of Colour

The world of colour exists as a vibrant world of imagination within Lily's mind. It's a place where her thoughts and emotions take shape, creating a vivid and immersive world, which feels as real to her as the physical world she inhabits. In this extraordinary realm, every colour, creature, and adventure is a manifestation of her inner world, a canvas where she processes her grief. It's a testament to the rich imaginations of Lily and Dion, offering Lily a sanctuary where beauty and wonder thrive despite the profound loss.

To locate the 'box of colours,' which supposedly has the potential to restore Lily's world from its greyness and avert the impending doom of the world of colour, they must embark on a journey into Lily's most colourful memories.

However, Lily struggles to locate these memories, and her inner battle manifests as a mysterious corrupting entity that steals away all the colours in the world, much like in her grey world. This corruption affects not only Lily but also the creatures of the world, causing them to mirror the emotions she is going through.





# The Traveler

Stage; Denial

As Lily denies the urgency to find the box of colours and seeks enjoyment in this colourful world, they come across a mysterious traveller whose colossal backpack initially appears as a mere boulder. Lily and Theon approach him carefully as he seems to be behaving out of place. The traveller offers to assist them, but his reliability becomes increasingly questionable as he frequently backtracks and denies ignorance, casting doubt on his trustworthiness.







# The Forest Guardian

Stage; Anger

Realising her role in corrupting the world of colours, Lily's inner conflict transforms into anger directed at herself. That's when Lily and Theon encounter an uncommunicative wild beast. Once a majestic guardian of a pristine forest, he succumbed to anger as the corrupting force encroached upon his sacred domain. Fueled by negative energy, the corruption transformed him into a wild, unreasonable beast, driven to devour anything in his path.



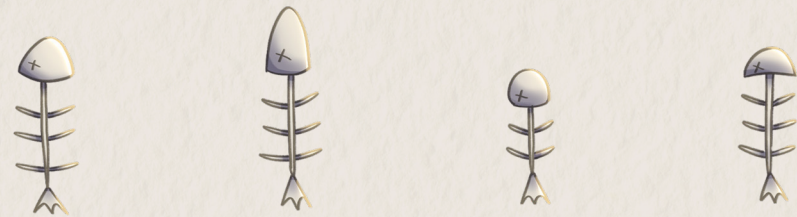


# The Fisherman

Stage; Bargaining

As Lily and Theon approach the end of their journey, their hopes soar with anticipation of finding the 'box of colours'. However, their optimism is met with the despair of the corruption blocking their path.

In their quest for assistance, Lily turns to a local fisherman, only to uncover the profound impact the corruption has had on his well-being. Faced with extensive consequences, Lily grapples with guilt and self-doubt, attempting to regain control. Unfortunately, this internal struggle fosters a growing rift between Theon and Lily, casting a shadow over their once-unified purpose.







# Corrupted Theon

Stage; Depression

As Theon and Lily drift apart, she falls into a deep state of despair because she can no longer find the box of colours in time before it too becomes corrupted. Consequently, the corruption overwhelms the entire world of colours, even causing Theon, her companion throughout the journey, to succumb as well.







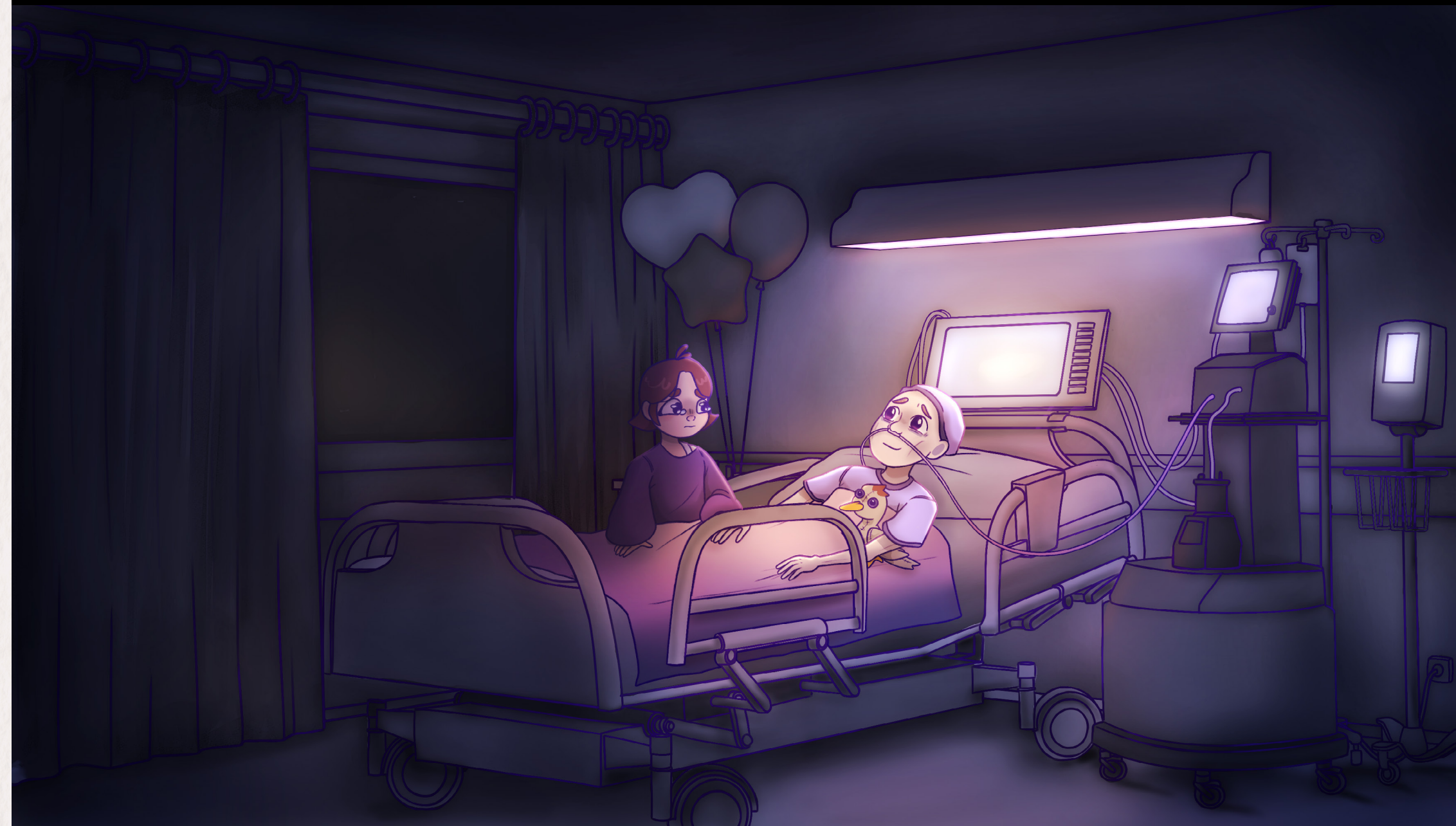
# Dion

## Stage; Acceptance

To help all the corrupted figures, including Theon, and locate the 'box of colours,' Lily must overcome her fears and self-doubt. As she drives herself forward with her strength and drive, she reunites with Dion with a duck-shaped stuffed animal beside him, in a memory deep within. While Lily was lost in the abyss, unable to process the loss, she finally embraces reality and reaches acceptance.

Upon returning to reality, Lily finds the 'box of colours' in Dion's room, where they hid it together. It contains drawings from the many fantasies she and Dion shared in the world of colours, chronicling the journey she had with Theon all along.

Lily's ultimate lesson is that her feelings of grief cannot be vanquished by a mere 'box of colours' or through denial, anger, bargaining or even succumbing to it; these are merely coping mechanisms. The true battle lies on the road to acceptance.





# Character Lineup







Annemarijn



Annemarijn Hendriks  
Lead Character Designer

Colourist

IG; *pastelmello*



ASHLEY



Ashley Haagsma  
Story Designer

3D Artist

Artstation; *lxcrimosx*



JARA



Jara Bouman  
Art Director

Environment Artist

IG; *starrsx.art*



BAS

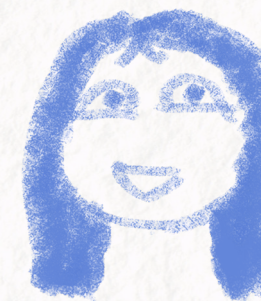


Bas van den Borg  
Lead Creative Director

Layout Artist



RACHEL



Rachel Rietjens  
Lead Environment Artist

3D Artist

Artstation; *rachelrietjens*





Lily